



Trinity College Dublin

Coláiste na Tríonóide, Baile Átha Cliath

The University of Dublin

Advancing Research Impact: Lessons from Trinity's Research Impact Pilot

Sarah Bowman, Director of Strategic Engagement & Impact Assessment

Office of the Dean of Research

7 December 2021

Research Impact Pilot Project (2020 – 2022)

“Begin a discussion that broadens our thinking around what research impact is”

OFFICE OF THE DEAN OF RESEARCH



Dr Fiona Killard



Dr Jennifer Daly



Dr Ruth Doherty



Dr Penny Storey



Sarah Bowman
PPI Ignite (2017-2020)
ODRes (2020 – Present)



TRINITY LONG ROOM HUB



Dr Giovanna Lima
Prof Eve Patten
Prof Jane Ohlmeyer



SCHOOL OF MEDICINE



Bridget Gavin
Prof Louise Gallagher
Prof Ursula Fearon

Our Strategic Plan



Civic action >

Through our teaching, research and public engagement, we courageously advance the cause of a pluralistic, just and sustainable society.



Organisation >

We foster an effective and flexible organisation, which values all members of our community.



Research >

Pursued at the frontiers and intersections of disciplines, our research benefits our students, Ireland, and the world.



Education >

We challenge our students to think independently, communicate effectively, act responsibly, and develop continuously, equipping them for lives of active citizenship.



A Living Research Excellence Strategy

Our vision is to engage in research with the **quality, intensity, depth, diversity, and openness** that leads to **fundamental breakthroughs, new understandings, key insights,** and that can make **translational and transformative advances** – or, to build a world in which we want to live.

01. STIMULATE AND BUILD STRATEGIC RESEARCH COLLABORATIONS



In deciding our path, we need to make the best use of the research expertise and research support we have. We also need to look outwards, at external opportunities and at societal needs.

02. MAKE IT EASIER TO DO RESEARCH



We need to use the resources we have in more effective ways, and find innovative solutions to the various challenges we face.

03. GENERATE THE RESEARCH FUNDING AND RESOURCES WE NEED



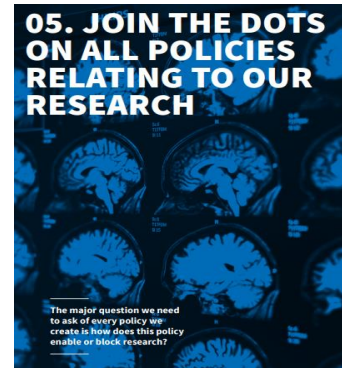
We need to unlock existing resources within Trinity and refocus them on research activities which are important for driving the research agenda forward.

04. RADICALLY REVISE HOW WE DO RESEARCH COMMUNICATIONS



How effectively we communicate the research we do to the outside world has a profound effect on our standing, our influence, our rankings, and our ability to attract funding.

05. JOIN THE DOTS ON ALL POLICIES RELATING TO OUR RESEARCH



The major question we need to ask of every policy we create is how does this policy enable or block research?

06. BE BOLD IN PLANNING OUR LONG-TERM RESEARCH FUTURE



Trinity is 427 years old. It has stood the test of time. However, we need to be able to step back and ask, whether we can and should do things differently.

Broaden Our Local and Global Impact

- Understanding impact in its fullest form
- **Taking the lead on articulating impact**
- **Building collaborations and partnerships of strategic importance**
- **Identifying and delivering opportunities for local and global impact**
- **Supporting researchers in translating research into tangible benefits**
- Exemplifying the diverse forms of scholarship in Trinity's research landscape
- **Supporting researchers in articulating the great impact they are already making**
- **Advancing approaches to research that engage and involve stakeholders**
- Embracing open scholarship concepts
- Leveraging the expertise of our alumni network
- Expanding and diversifying research funding to advance high-quality research

Our Approach to Advancing Research Impact

**Build Capacity for Research Impact
by Supporting Strategic Efforts**

**Help Researchers Describe Their
Impact In Ways that Matter to Them**

Broaden Our Thinking Around What Research Impact Is

**Integrate Research Impact into
Complementary Efforts**

**Share Good Practices and Resources
to Nurture Talent**

Our Approach to Advancing Research Impact

Build Capacity for Research Impact by Supporting Strategic Efforts

Help Researchers Describe Their Impact In Ways that Matter to Them

Broaden Our Thinking Around What Research Impact Is

Integrate Research Impact into Complementary Efforts

Share Good Practices and Resources to Nurture Talent

Build Capacity for Research Impact by Supporting Strategic Efforts



Trinity College Dublin
Coláiste na Tríonóide, Baile Átha Cliath
The University of Dublin

School of Medicine
Research Strategy: 2021 - 2026

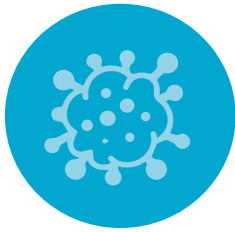


School of Medicine Research Strategy: 2021 - 2026

Identified Their Research Strengths



**Children's
Health**



Cancer



**Personalised
Medicine**



**Mental Health &
Neuroscience**



**Infection &
Immunology**



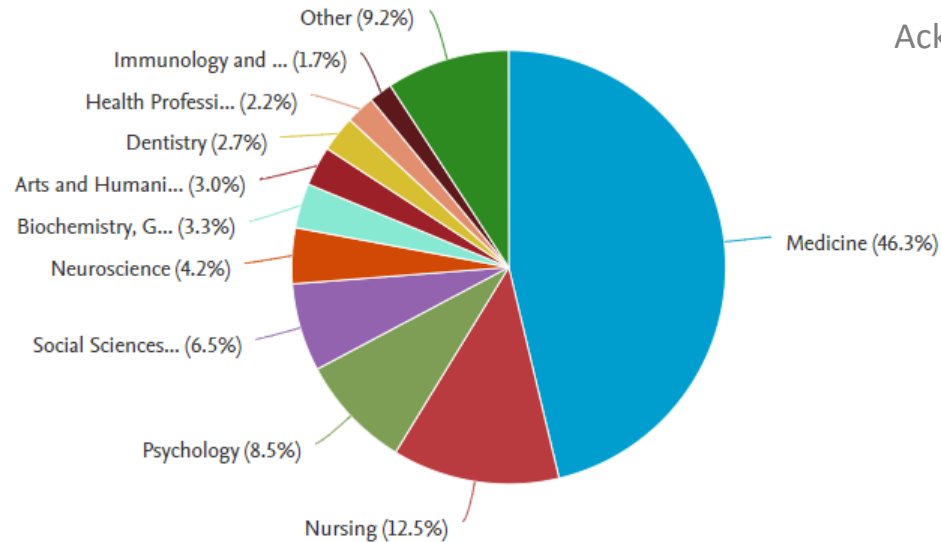
**Population
Health and
Health Policy**



Ageing

Showcasing Our Strengths: Child Health Research

Child Health Research Publications TCD 2010-2021 by Subject Area, Scopus, Dec 2021



Acknowledgement: Bridget Gavin

paed*
child*
neonat*
infant*
adolescen*
"Ireland"

An estimated **940 peer reviewed articles, reviews and conference papers** were authored or co-authored by researchers affiliated to Trinity College Dublin for the period 2010-2021. *Source Scopus December 2021*

Showcasing Our Strengths: Child Health Research



Professor Eleanor Molloy

How is our research in Child Health informing policies and clinical guidelines?

Showcasing Our Strengths: Our Influence on Child Health Policy

Acknowledgement: Bridget Gavin, Overton, Dec 2021 [888 / 940 DOIs]

POLICY SOURCE TYPES

Government (Healthcare Agency)	131 (60)
Think Tank	54
International Government Organisation	37
Other	42

Article count
212

Cited in countries
33

Cited in sources
124



KEY POLICY SOURCES

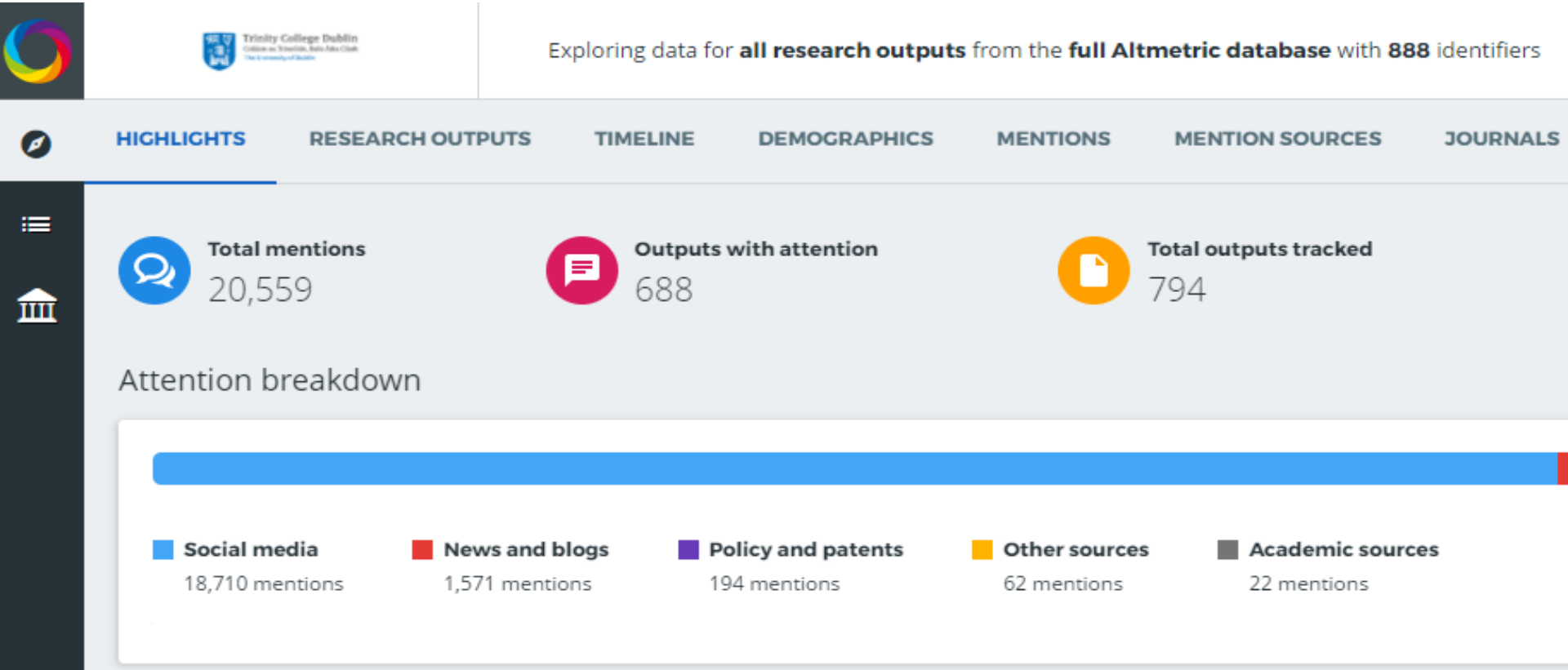
Guidelines in PubMed Central (USA)	39
World Health Organisation	31
ESRI (Ireland)	29
NICE (UK)	20
Publications Office of the European Union	15
GOV.ie (Ireland)	12
GOV.UK (UK)	10
Agency for Healthcare Research and Quality (AHRQ)	9
European Monitoring Centre for Drugs and Drug Addiction (EMCDDA)	8

MAIN JOURNAL SUBJECTS

Psychiatry and Mental Health	39
Public Health, Environmental and Occupational Health	31
Paediatrics, Perinatology and Child Health	29
Health (social science)	20
Medicine (miscellaneous)	15
Obstetrics and Gynecology	12

How Visible is Our Research on Social and News Media?

Acknowledgement: Bridget Gavin, Altmetric, Dec 2021 [888 / 940 DOIs]





Trinity College Dublin

Coláiste na Tríonóide, Baile Átha Cliath

The University of Dublin

Research Impact Assessment Is **Purpose-Driven & Audience-Specific**

We Must Get Our 'Houses' in Order

STEP 4: Organise that information into **a format appropriate to your audience and the purpose of the communication.**

STEP 3: **Summarise the work** of all the primary PIs and research groups **using a template with predetermined key criteria.**

STEP 2: Perform an audit and **ensure the digital record is accurate** for all of those academics, research groups and clinical associates.

STEP 1: **Identify the academics, research groups and clinical associates across all affiliated sites** involved in "X" (e.g. Child Health Research).

Our Approach to Advancing Research Impact

**Build Capacity for Research Impact
by Supporting Strategic Efforts**

**Help Researchers Describe
Their Impact In Ways that
Matter to Them**

Broaden Our Thinking Around What Research Impact Is

**Integrate Research Impact into
Complementary Efforts**

**Share Good Practices and Resources
to Nurture Talent**

Research Impact Case Study



1641 Depositions: Sharing Our History, Building a Legacy

The 1641 Depositions provide the chief evidence for the sharply contested allegation that the 1641 Rebellion began with a massacre of Protestant settlers in Ireland. As some of the most controversial documents in Irish history, the Depositions have been exploited by propagandists, politicians and historians, and the disagreements surrounding them have never been satisfactorily resolved. As a result, they have been central to one of the most protracted and bitter of historical debates.

The [1641 Depositions Project](#) made publicly available, online, a unique and unparalleled source of information for the causes and events surrounding the 1641 Rebellion and for the social, economic, cultural, religious, and political history of seventeenth century Ireland, England and Scotland. This project has transformed our understanding of how controversial events are recorded and remembered. In doing so, it has made a contribution to the on-going peace process in Ireland and become a flagship digital humanities project for others to learn from.

This project showcases Trinity's expertise in curating and cataloging historical collections. Our research teams enhance technologies, ensuring the conservation and preservation of artefacts. We generate new research opportunities and encourage public scholarship to address societal challenges.

Trinity Long Room Hub
Arts & Humanities
Research Institute

PRINCIPAL INVESTIGATORS:
Professor Jana Oehlmeier;
Professor Micheál Ó Síocháin;
Professor John Morrill;
Professor Thomas Bartlett;
Professor Aidan Clarke

TRINITY COLLEGE DUBLIN:
School of Histories and
Humanities; the Library of
Trinity College Dublin

COLLABORATORS:
University of Aberdeen;
University of Cambridge; IBM;
Eneclann; ADAPT

FUNDERS:
Irish Research Council; UK
Arts & Humanities Research
Council; Library of Trinity
College Dublin

SUBJECT AREAS:
History; English; Geography;
Library; Linguistics; Language
and Literatures; Computer
Science; Information Science

IMPACT KEYWORDS:
Cultural Heritage; Innovative
Technologies; Peace Building;
Knowledge Exchange; Open
Scholarship



Research Impact Case Study Guide

This guidance document outlines key information useful to the development of a research impact case study. As you set out to tell your story, three questions must be answered: 1) why do you want to tell this story; 2) who is your primary audience; and 3) what format and level of detail are appropriate for that audience? With this knowledge in hand, the impact case study is customised to capture necessary information.

For Page 1, identify a photograph, graphic, design, video or image that represents your research project. It should be provocative, interesting, and in high resolution. This image can be sized to allow for more or less text on this page.

Principal Investigators could also record a video to embed within the case study, to provide a personalised welcome to the reader, offer a statement on the project's impact, or showcase the specific outcomes through embedded media throughout.

Project Name: Impact-focused title about your story

A research impact case study is a concise audience-facing document that highlights the relevant impacts that have resulted from a research project. In this section, provide introductory information about the project. First, understand the story you want to tell. Reflect on the multiple results and benefits resulting from your research. Then, in non-specialist, easy-to-understand language, describe what problem or opportunity existed that your research addressed. Illustrate the status quo for your stakeholders before your research project had its results. This section might include:

- Historical information relevant to the project which provides a context;

- Compelling information on the challenge or idea you set out to investigate;
- The project history that led to this phase of the research journey;
- A unique collaboration that led to this phase of the research journey; or
- A statement about what the project has achieved, which will be explored in this case study.

Don't overstate your impact: be realistic and rigorous in evidencing. Write in plain English, choosing active verbs, and avoiding abbreviations and acronyms. This section, in this format, accommodates 250 words.

This project showcases Trinity's expertise in ... [Add a value statement here which speaks to your expertise and which is aligned with your strategic priorities. This statement in this format accommodates 50 - 100 words.]

SCHOOL / CENTRE / INSTITUTE:
Confirm your affiliation

PRINCIPAL INVESTIGATORS:
Identify your leaders

TRINITY COLLEGE DUBLIN:
Identify TCD collaborators

COLLABORATORS:
Identify external collaborators

FUNDERS:
Identify funders

SUBJECT AREAS:
Find subject groupings [here](#) or
utilise [Scopus Subject Areas](#)

IMPACT KEYWORDS:
Choose keywords for your
research impact, which can be
tied to relevant #hashtags or
campaigns

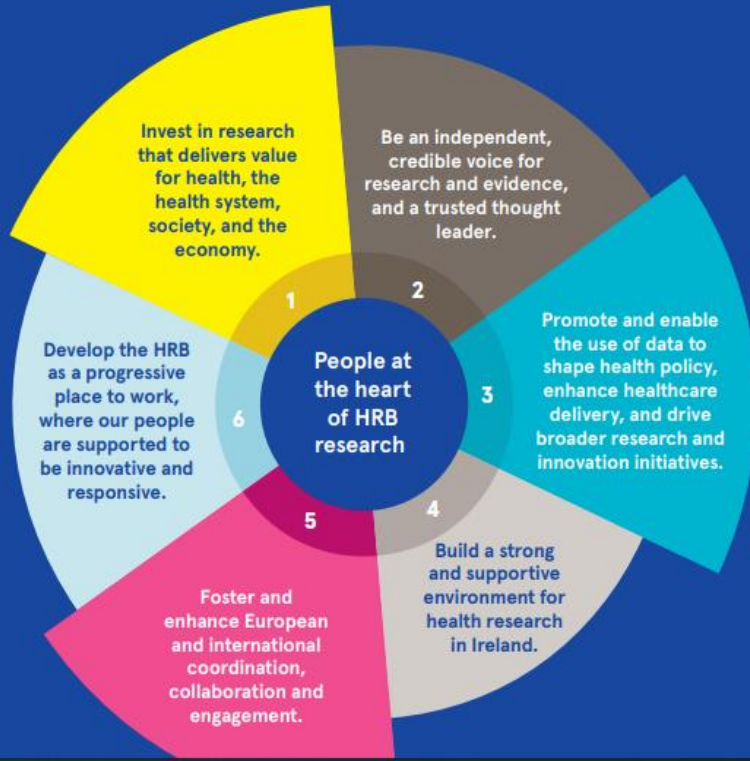
SDG ALIGNMENT:
Identify the [Sustainable
Development Goals](#) which your project
aligns with below



Help Researchers Describe Their Impact In Ways that Matter to Them

IDS-TILDA

2021-2025 strategic objectives



Strategic goals and key actions, 2020-2024

In order to realise its mandate, vision and mission, the *Strategic Plan 2020-2024* has five key goals and associated actions which express our core values:

1. Enable excellence in people, skills and ideas across all disciplines for discovery and enterprise research.
2. Be a partner of choice nationally and internationally to support excellent research that addresses the challenges of our time.
3. Demonstrate the value of the research we support, ensuring that the knowledge and innovations generated are shared and exchanged to the maximum extent.
4. Make a tangible contribution to innovation, evaluation and reform in the higher education and research ecosystem.
5. Achieve and maintain excellence and optimise the IRC's capacity as an organisation.

1. Evidence to Action: Responding to COVID-19

Activating Research Infrastructure to Safeguard a Vulnerable Population

THE IMPACT OF COVID-19 on People Ageing with an Intellectual Disability in Ireland



2020



Encouraging
Evidence-Informed
Decision-Making By
Carers, Service
Providers and
Policymakers

1. Evidence to Action: Responding to COVID-19

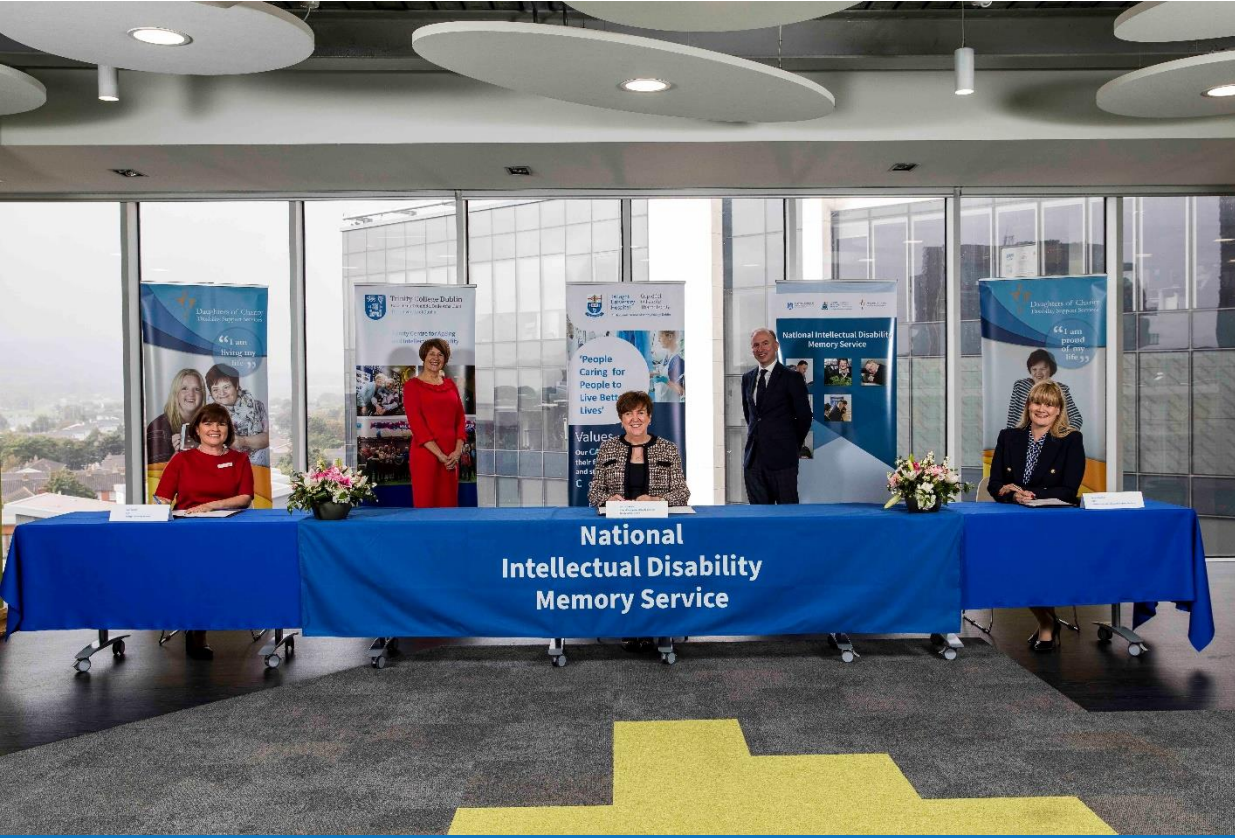
Activating Research Infrastructure to Safeguard a Vulnerable Population

Key Impact Message: IDS-TILDA Data Informed Strategic Responses to COVID-19 by Government, Service Providers and Carers across Ireland.

- COVID-19 Assessment and Recognition Among People with Intellectual Disability: **Hosted on HSELand + 3,750 healthcare professionals in Ireland completed this module.**
- Seven-part webinar series for carers and service providers, between April and May 2020, to address information gaps: **10,000 attendees + 6,000 views.**
- Engagement with Houses of the Oireachtas, Minister Anne Rabbitte, TD, Special Committee on COVID-19; Federation of Voluntary Service Providers; Dr Colm Henry, HSE Chief Clinical Officer, Dr Tony Holohan, Chief Medical Officer, and Others: **vaccine + booster prioritisation for people with ID.**

2. Evidence to Action: Transforming Health Care Delivery

Launching the National Intellectual Disability Memory Service



**Addressing Service Gaps,
Promoting Access to Quality
Care & Delivering Better
Health Outcomes through
Collaboration**

NIDMS: Impact Framework – Pilot

Planning for Impact

- Better Patient Outcomes
- Better Experiences of Care
- Staff Development

The National Intellectual Disability Memory Service



The National Intellectual Disability Memory Service is a centre of excellence in proactive dementia assessment and diagnosis for people with an intellectual disability (ID), particularly supporting people with Down syndrome given their increased genetic risk for dementia.

[MORE](#)

2. Evidence to Action: Transforming Health Care Delivery

Launching the National Intellectual Disability Memory Service

Key Impact Messages: By delivering Ireland's first National Intellectual Disability Memory Service, we are advancing *National Dementia Strategy* and *Sláintecare Strategic Priorities*.

- Between August 2020 and February 2021, NIDMS delivered **79 clinics, 40 consensus meetings, and 32 consultations**. Based on these activities, NIDMS has collected data which supports:
 - **Better Patient Outcomes:** Includes patient testimonials on positive experiences of assessment, diagnosis, and the delivery of post-diagnostic supports;
 - **Better Experiences of Care:** Includes testimonials by patients, carers, and service providers on reductions in feelings of worry and stress, as well as appreciation for timely diagnoses, and the delivery of respite and support services; and
 - **Continued Development and Supported Staff:** Includes recognition by staff on process improvements in the delivery of care, as well as greater equity in accessing services, and changes in local practices due to engagement with NIDMS.

3. Evidence to Action: Building Capacity for Change

Developing Positive Ageing Indicators *with* People with Intellectual Disabilities



**Delivering A More
Equitable Health Policy
Landscape**

3. Evidence to Action: Building Capacity for Change

Developing Positive Ageing Indicators *with* People with Intellectual Disabilities

PARTICIPATION

- Employment rate
- Ever in paid employment*
- Day programmes*
- Formal education
- Informal education
- Low numeracy
- Low literacy
- Level of education*
- Difficulty using money*
- Political activities
- Volunteering
- Social activities
- Loneliness
- Social support
- Part of community*
- Contact with family*
- Having a confidant*
- Barriers to participation*
- Public and private transport
- Choice day-to-day*
- Choice life decisions*
- Advocacy service*

HEALTHY AGEING

- Self-rated health
- Chronic disease
- Multiple chronic conditions
- Falls
- Fear of falling*
- Slow walking speed
- Pain
- Oral health*
- Bone health*
- Sensory impairment*
- Incontinence*
- Constipation*
- Cognitive impairment*
- Memory screening
- ADLs
- Help with ADLs*
- Smoking
- Drinking alcohol*
- Physical activity
- Weight
- Life satisfaction
- Anxiety
- Emotional, nervous or psychiatric condition*
- Community services
- Mammogram
- Flu vaccine
- Five or more medications
- Cholesterol*
- High blood pressure*
- Unmet need for community care
- Living situation*
- Carer stress

SECURITY

- Shortage of money
- Key to own home*
- Number of people in house*

CROSS-CUTTING OBJECTIVES

- Good things about getting older*
- Use of internet
- Mobile phone use*
- Access to and use of computer*

HOUSING



PARTICIPATION



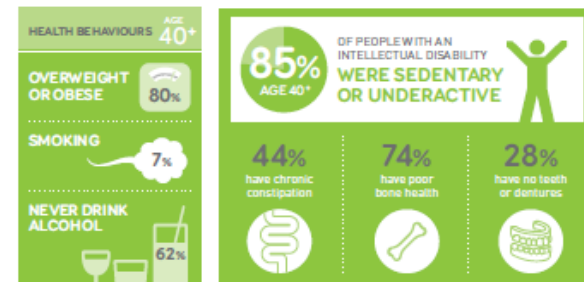
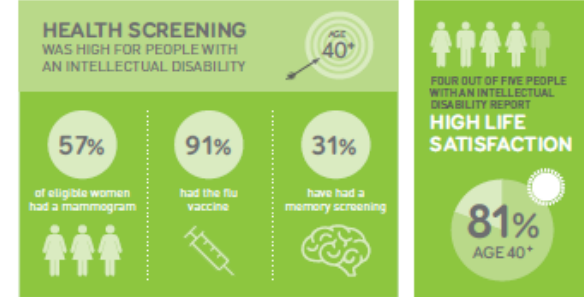
ATTITUDES TOWARDS AGEING



TECHNOLOGY



HEALTHY AGEING





Trinity College Dublin

Coláiste na Tríonóide, Baile Átha Cliath

The University of Dublin

In November 2021, IDS-TILDA was successful in its funding application to the Health Research Board for Wave 5 of the study. During the review process, the International Review Panel noted that IDS-TILDA was **‘one of the most significant studies on ageing of people with ID in the world’**.



Trinity College Dublin

Coláiste na Tríonóide, Baile Átha Cliath

The University of Dublin

‘Without the support of the Impact Team – Sarah, Giovanna, Bridget – **I can say with confidence that despite my hard work over the years, I would not have been fully aware of the reach or impact of my research.** Thanks to the Impact Team!’ - Professor Mary McCarron

Worksheet: Profile Inventory

2. ORCID

- I **have an [ORCID ID](#)** that distinguishes me from every other researcher
- My ORCID biography is **connected** to Trinity College Dublin and is up to date
- My **publications** list is updated on my ORCID profile
- I have other professional **profiles** connected to my ORCID page, such as [TCD Research Profile](#)
- My ORCID **keywords** are relevant to my research and career ambitions

3. TRINITY'S RESEARCH SUPPORT SYSTEM (RSS)

- My [RSS Profile](#) is **fully up to date** with extensive information in Biography sections including Teaching, Research Interests, Service to Discipline, Qualifications, Memberships, Awards, Education, Conferences, Collaborations, Keywords, Tags, Projects, Publications, References
- My RSS Profile is **connected** to my ORCID profile
- My RSS Profile is **consistent** with my CV and publications list
- Where relevant, my publications have **permanent identifiers** (e.g. DOIs or URLs)
- When relevant, I have uploaded my publications to [TARA](#), Trinity's **Open Access** Repository

**Researcher Profile Development
Showcasing Researcher Excellence Workshops**

Showcasing Researcher Excellence: Prof Mary McCarron

Acknowledgement: Dr Giovanna Lima, Dec 2021

- 19.3% of publications (2011-2020) are in the **top 10% most cited publications worldwide**, with over **1.3k citations accumulated** (SciVal);
- 84.3% of scholarly outputs (2011-2020) were in **collaboration with international partners** (SciVal);
- 32 of publications have been cited in **26 Policy Documents** from **20 Different Sources** and from **9 Different Countries**, of which **14 are Clinical Guidance Documents** (Overton); and **2 of her publications are cited in 2 Patents** (Altmetric);
- Her scholarly outputs are cited in articles by *The Irish Times*, *The Conversation* and other news outlets and blogs (Altmetric).

Our Approach to Advancing Research Impact

**Build Capacity for Research Impact
by Supporting Strategic Efforts**

**Help Researchers Describe Their
Impact In Ways that Matter to Them**


Broaden Our Thinking Around What Research Impact Is

**Integrate Research Impact into
Complementary Efforts**

**Share Good Practices and Resources
to Nurture Talent**

RSS System Upgrades

Identifying Impact for Outputs & Activities


 Trinity College Dublin
 Coláiste na Tríonóide, Baile Átha Cliath
 The University of Dublin

Research Support System

[Portal Home](#)
[Portal Help](#)
[Log me off](#)

Menu

Publications and Other Research Outputs List

Page help ?

Publications and Other Research Outputs


Click on the underlined column headings to reorder your publications and other research outputs.

[Add a new publication or other research output](#) OR [Select a different import method](#)

Peer Reviewed Publications and Other Research Outputs. Total: 3								
<u>Edit</u>	<u>Share</u>	<u>Impact</u>	<u>Type</u>	<u>Reference</u>	<u>Year</u>	<u>Status</u>	<u>Source</u>	<u>Delete</u>
			Journal Article	COUTO, CLAUDIO GONÇALVES ; LIMA, GIOVANNA DE MOURA ROCHA, Continuidade de Políticas Públicas: A Constitucionalização Importa?, DADOS-REVISTA DE CIÊNCIAS SOCIAIS, 59, 2016, p1055 - 1089 DOI URL	2016	PUBLISHED MANUAL		
			Journal Article	WOOD JR, THOMAZ ; COSTA, CAIO CÉSAR MEDEIROS ; LIMA, GIOVANNA DE MOURA ROCHA ; GUIMARAES, ROSANA CORDOVA, Impacto Social: Estudo sobre Programas Brasileiros Selecionados de Pós-graduação em Administração de Empresas, Revista de Administração Contemporânea, 20, 2016, p21 - 40 DOI URL	2016	PUBLISHED MANUAL		
			Journal Article	LIMA, GIOVANNA DE MOURA ROCHA; WOOD, THOMAZ, THE SOCIAL IMPACT OF RESEARCH IN BUSINESS AND PUBLIC ADMINISTRATION, 54, (4), 2014, p458 - 483 DOI URL	2014	PUBLISHED MANUAL		

Non Peer Reviewed Publications and Other Research Outputs. Total: 1								
<u>Edit</u>	<u>Share</u>	<u>Impact</u>	<u>Type</u>	<u>Reference</u>	<u>Year</u>	<u>Status</u>	<u>Source</u>	<u>Delete</u>
			Case Study	Jane Ohlmeyer, Giovanna M R Lima, Sarah Bowman, Eve Patten, Micheal O Siocru, 1641 Depositions: Sharing our history, building a legacy, 2020 <i>Notes: [This impact case study is supported by the Research Impact Unit, an initiative by the Office of the Dean of Research and the Trinity Long Room Hub at Trinity College Dublin. We thank Dr Annaleigh Margey, Dr Edda Frankot, and Dr Caitriona Curtis for their contributions in early drafts of this document.]</i> TARA - Full Text	2020	PUBLISHED MANUAL		

For page support email rssadmin@tcd.ie
Last updated:


 Trinity College Dublin
 Coláiste na Tríonóide, Baile Átha Cliath
 The University of Dublin

Research Support System

[Portal Home](#)
[Portal Help](#)
[Log me off](#)

Menu

Project Impact

Page help ?

[Main](#)
[Themes](#)
[UN SDGs](#)
[Engagement](#)
[IMPACT](#)
[Institutes](#)
[Share](#)
[Projects](#)
[CV](#)

[Click here to access the Campus Engage Impact Framework](#)

Indicate how ^{***} aligns with the Campus Engage Impact Framework

- Capacity Building benefits to individuals, organisations or communities whose education, training, skills or social capital are positively affected
- Economic benefits relating to businesses or other organisations whose activity helps create jobs and revenue, to developing the conditions and environment to sustain productive economic activity, or to advance long-term cost savings due to improved practices and processes
- Environmental benefits to the natural and built environment with its ecosystem services, together with societies, individuals or groups who benefit as a result
- Health and Wellbeing benefits to individuals, groups or targeted populations whose health and wellbeing outcomes have been improved or enhanced, or where potential harm has been mitigated
- Internationalisation benefits to researchers or research stakeholders from improved international reputation and engagement and reputation
- Policy and/or product development benefits to individuals or groups from professional, governmental and non-governmental organisations and charities and groups through policy changes or behavioural practice
- Professional and Public Services benefits to public and private organisations or individuals involved in the development and delivery of professional services through policy changes or behavioural practice
- Social and Cultural benefits to individuals, organisations or communities whose quality of life, knowledge and/or capacity is positively affected through creative practice, performance and increased cultural understanding

Description

RSS System Upgrades

Identifying Impact for Outputs & Activities

- Home >
- SDG Overview >
- ★ Impact Overview ▾
- Works
- Projects

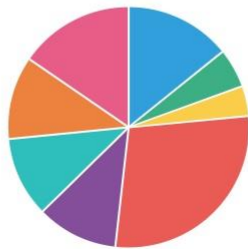
Impact Overview \



These charts are automatically updated at 2am nightly. Click on the Refresh button to update them manually.

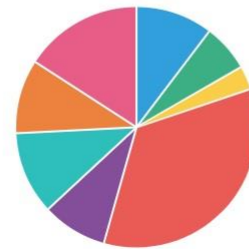
Refresh

324 Works



- Capacity Building
- Economic
- Environmental
- Health and Wellbeing
- Internationalisation
- Policy and/or product development
- Professional and Public Services
- Social and Cultural

122 Projects



- Capacity Building
- Economic
- Environmental
- Health and Wellbeing
- Internationalisation
- Policy and/or product development
- Professional and Public Services
- Social and Cultural

Showcasing Researcher Excellence

Advancing DORA Compliant Approaches



To discuss your wider contribution:

1. Generation of knowledge
2. Demonstrated leadership in research and scholarship
3. Demonstrated innovation in teaching
4. Development of individuals and collaborations
5. Advancing the research discipline / community / ecosystem
6. Service to College / discipline
7. Supporting broader societal and economic outcomes

Our Approach to Advancing Research Impact

**Build Capacity for Research Impact
by Supporting Strategic Efforts**

**Help Researchers Describe Their
Impact In Ways that Matter to Them**

Broaden Our Thinking Around What Research Impact Is

**Integrate Research Impact into
Complementary Efforts**

**Share Good Practices and
Resources to Nurture Talent**

2020 – 2021 Activities

Research Impact Pilot Project

- **17+ Co-Authored Publications:** Peer Reviewed Articles & Grey Literature
- **Proposal Development Workshops:** €9.48M Awarded / €2.97M TCD +
- **Showcasing Researcher Excellence:** 30 Workshops; 600+ Researchers Trained
- **12 Webinars:** 16,000+ Views
- **Updated Role Descriptions:** 5 include research impact activities
- **Integrated Research Impact into TCD Modules:** 5 (School of Nursing & Midwifery; Tangent; School of Psychology Climate Crisis Elective; CHARM-EU; PPI Ignite)
- **Promotions Success:** 2 Researchers
- **Impact Award Success:** 4 Researchers

Broaden Our Local and Global Impact

- Understanding impact in its fullest form
- **Taking the lead on articulating impact**
- **Building collaborations and partnerships of strategic importance**
- **Identifying and delivering opportunities for local and global impact**
- **Supporting researchers in translating research into tangible benefits**
- Exemplifying the diverse forms of scholarship in Trinity's research landscape
- **Supporting researchers in articulating the great impact they are already making**
- **Advancing approaches to research that engage and involve stakeholders**
- Embracing open scholarship concepts
- Leveraging the expertise of our alumni network
- Expanding and diversifying research funding to advance high-quality research

Implement Recommendations for HEIs



ENGAGED RESEARCH FOR IMPACT: SOCIETY AND HIGHER EDUCATION
ADDRESSING SOCIETAL CHALLENGES TOGETHER



RECOMMENDATIONS FOR HIGHER EDUCATION INSTITUTIONS

A series of recommendations for higher education institutions were agreed as part of a year-long Campus Engage national and international consultation process. Challenges to advancing engaged research can be addressed by the following actions. Enabling institutional infrastructure must be developed and resources effectively channelled in order to implement policy and practice on engaged research for the benefit of all. This will help to promote research excellence and better position researchers nationally and internationally to achieve impact and social change, as knowledge and innovation leaders.

- Include a clear commitment to engaged research in institutional strategic plans, embedded into research, innovation, teaching and learning activities;
- Identify a senior leader to strategically implement engaged research policies, with responsibility for advancing enabling infrastructure to promote and support higher education institution-community research partnerships;
- Broaden research metrics to recognise and reward the impact of engagement in realising societal benefits;
- Provide institutional reward and recognition for engaged research and reflect this in hiring and promotions procedures;
- Identify and develop research career pathways to encourage sustained engagement between researchers and community partners;
- Accommodate flexible scheduling and timetabling of workloads to facilitate engaged research activities;
- Ensure engaged research is integrated into undergraduate curricula, and postgraduate and doctoral training;
- Put in place simplified payment/reimbursement systems and processes that facilitate partnering and that accommodate non-university staff;
- Allocate funding for engaged research travel and conferences, application writing supports and transdisciplinary team development;
- Develop local communication and information systems to facilitate disciplines, departments and colleges in capturing past and ongoing engaged research projects, promoting mutual learning and avoiding duplication of effort;
- Develop resources including case studies, methods toolboxes and evaluation frameworks in order to share lessons learned and to support researchers;
- Provide and fund structured networking opportunities with higher education staff for interested public or professional service and product users, policy-makers, civil and civic society organisations, and members of the public who are interested in collaborating;
- Provide and fund training on good practice for engaged research, in partnership with public or professional service and product users, policy-makers, civil and civic society organisations, and members of the public.



Trinity College Dublin

Coláiste na Tríonóide, Baile Átha Cliath

The University of Dublin

Thank You!

Sarah Bowman

Director of Strategic Engagement & Impact Assessment

Office of the Dean of Research

bowmans@tcd.ie